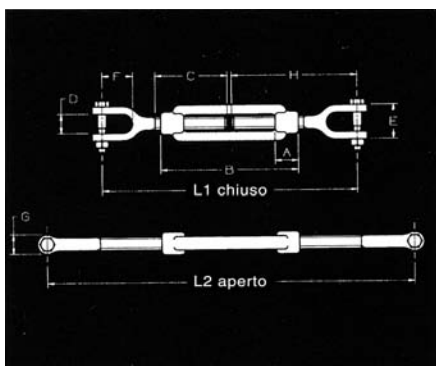
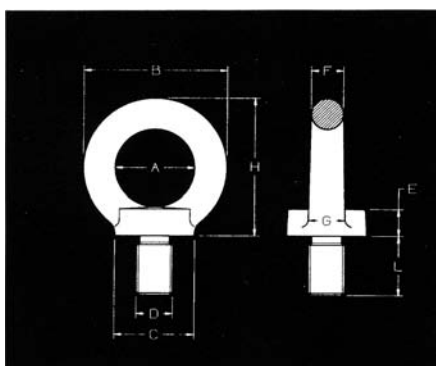


## Tenditori a due forcelle zincati



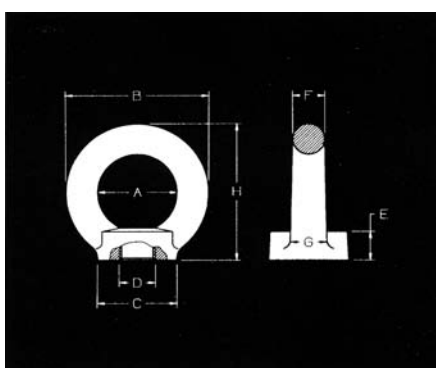
Misura	A mm	B mm	C mm	D mm	E mm	F mm	G mm	H mm	L1 mm	L2 mm	Bullon emm	Portata Kg	Peso Kg
M 6	10	8	60	8	16	20	14	87	171	241	6x25	100	0,090
M 8	12	110	70	10	20	25	18	104	231	329	8x35	160	0,220
M10	15	130	80	12	24	30	20	124	259	359	8x35	250	0,330
M12	18	140	90	16	30	38	24	145	295	405	10x40	400	0,580
M16	22,5	190	100	20	36	44	32	170	342	502	12x50	630	1,210
M20	30	220	110	24	44	50	38	184	376	556	16x60	1000	2,140
M22	33	242	120	28	52	56	46	210	426	611	20x70	1600	3,370
M27	43	300	130	32	60	62	54	223	498	687	20x80	2000	6,120
M30	45	255	140	36	68	70	62	252	510	735	24x85	2500	7,540
M33	48	300	150	40	78	78	70	270	548	768	27x95	3150	8,940
M36	55	295	170	45	90	85	78	300	596	821	30x115	4000	12,980
M39	58	310	170	45	105	90	80	300	599	864	36x130	5000	16,010

## Golfari maschi neri DIN 580



Misura	A mm	B mm	C mm	E mm	F mm	G mm	H mm	L mm	Portata $\perp$ Kg	Portata 45° Kg	Peso Kg
M 6	20	36	20	6	8	10	36	13	50	25	0,060
M 8	20	36	20	6	8	10	36	13	140	95	0,060
M 10	25	45	25	8	10	12	45	17	230	170	0,110
M 12	30	54	30	10	12	14	53	20,5	340	240	0,170
M 16	35	63	35	12	14	16	62	27	700	500	0,310
M 18	35	63	35	12	14	16	62	27	800	565	0,480
M 20	40	72	40	14	16	19	71	30	1200	830	0,480
M 22	40	72	40	14	16	19	71	30	1400	930	0,480
M 24	50	90	50	18	20	24	90	36	1800	1270	0,900
M 27	60	108	65	22	24	28	109	45	2700	1830	1,250
M 30	60	108	65	22	24	28	109	45	3600	2600	1,700
M 33	60	108	65	22	24	28	109	45	4300	3050	1,900
M 36	70	126	75	26	28	32	128	54	5100	3700	2,150
M 42	80	144	85	30	32	38	147	63	7000	5000	4,150
M 48	90	166	100	35	38	46	168	68	8600	6100	6,200
M 56	100	184	110	38	42	50	187	78	11500	8300	8,800
M 64	110	206	120	42	48	58	208	90	16000	11000	12,400
M 72	140	260	150	50	60	72	260	100	21000	15000	22,500
M 80	160	296	170	55	68	80	298	112	23000	20000	34,500
M100	180	330	190	60	75	88	330	130	38000	27000	47,800

## Golfari femmina neri DIN 582



Misura	A mm	B mm	C mm	E mm	F mm	G mm	H mm	Portata $\perp$ Kg	Portata 45° Kg	Peso Kg
M 6	20	36	20	8,5	8	10	36	50	25	0,060
M 8	20	36	20	8,5	8	10	36	140	95	0,060
M10	25	45	25	10	10	12	45	230	170	0,100
M12	30	54	30	11	12	14	53	340	240	0,170
M14	30	54	30	11	12	14	53	440	270	0,150
M16	35	63	35	13	14	16	62	700	500	0,260
M18	35	63	35	13	14	16	62	800	650	0,240
M20	40	72	40	16	16	19	71	1200	830	0,410
M22	40	72	40	16	16	19	71	1400	1050	0,360
M24	50	90	50	20	20	24	90	1800	1270	0,730
M27	50	90	50	20	20	24	90	2100	1550	0,820
M30	60	108	65	25	24	28	109	3600	2600	1,400
M36	70	126	75	30	28	32	128	5100	3700	2,030
M42	80	144	85	35	32	38	147	7000	5000	3,500
M48	90	166	100	40	38	46	168	8600	6100	4,820
M56	100	184	110	45	42	50	187	11500	8300	6,690
M64	110	206	120	50	48	58	208	16000	11000	10,100
M72	140	260	150	60	60	72	260	21000	15000	46,000